

ALPHA



Adjustable Headrest

Optional Headrest accessory adjusts 49mm (1.9") vertically.

- Pivoting range : 63°

Arms

3D arms allow fluid adjustment in three directions :

- Height adjustment range : 72mm (2.8")
- Front-to-back adjustment range : 40mm (1.6")
- Pivoting arm caps : 17° inward and 17° outward

Mesh Seat

Optional Mesh Seat provides dynamic support and allows airflow, providing a comfortable sit in any environment.

Weight-activated Synchronized Mechanism

Auto-Balance tension adjustment utilizes the weight of the user to balance resistance of the back.

- 3:1 back to seat synchronous movement with 3 position back lock.
- Back reclines 18° from upright position.

Adjustable Backrest

Backrests allow fluid adjustment in two directions :

- Height adjustment range : 43mm (1.7")
- Width adjustment range : 33mm (1.3")

DUOREST® System

DUOREST® System makes dynamic sitting by allowing freedom of movement in any position. DUOREST® System reduces fatigue and alleviates back pains associated with long sitting.

Seat Slider

Seat depth adjusts within a 50mm (2.0") range to accommodate users of varying leg lengths.



Base

27" (688mm) Five-arm base is available in plastic or polished aluminum.

Casters

50mm O.D. casters for use on hard floors. Only available in Black.

FEATURES

- Ergonomic DUOREST® System
- Adjustable headrest with PU Pad
- Synchronized Mechanism with Tension Adjuster from DONATI
- Backrest Tilt Lock in 4 positions by lever
- Standard Seat Slider
- 3-way Adjustable Armrest
- Frame available in Black and White
- Base available in Black and White
- Standard 300 lbs. weight capacity

COLORS

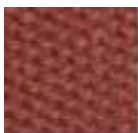
Black Frame

White Frame

Fabric (Back & Sponge seat)



Black



Berry



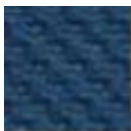
Gray



Berry



Deep blue



Deep blue

Mesh (Seat)



ID102
Black



ID102
Dark gray

STATEMENT OF LINE



ALPHA-HBDA-S



ALPHA-HBDA-SW



ALPHA-HBDA-M



ALPHA-HBDA-MW

CERTIFICATIONS

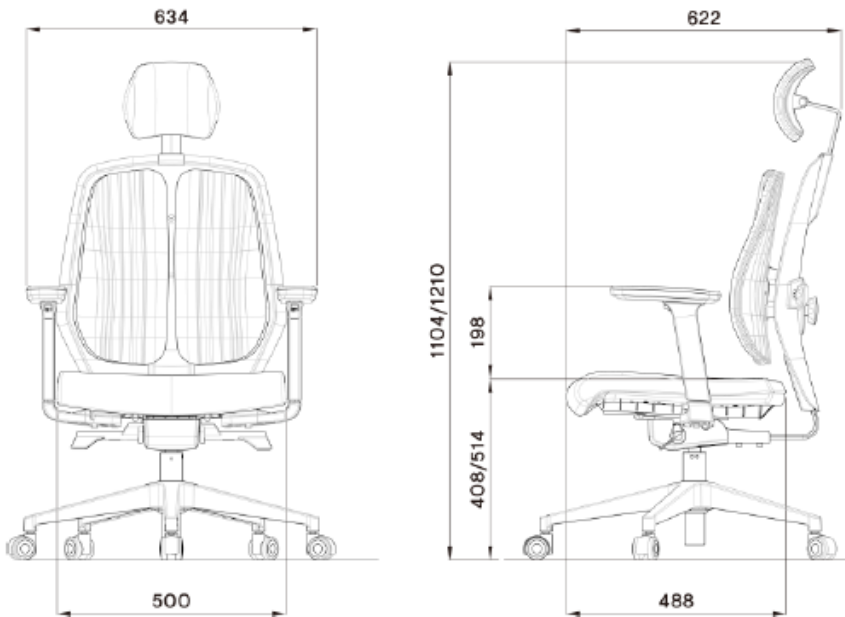
ANSI/BIFMA X5.1-2017
ISO 14001 & 9001



SPECIFICATIONS

• Net Weight (Fabric / Mesh)	16kg (35.3 lbs) / 18.6kg (41 lbs)
• Headrest Frame	PA6
• Backrest Frame	PA6
• Back shell	PA6
• Cushion Seat	Polyurethane fill
• Seat Pan Frame	PP
• Mesh Seat	Poly Elastomer
• Adj. Armrest	PA6
• Base Materials	PA6
• Casters Materials	PA6 and PU
• Carton Box Size	750*660*415 (mm)
• Container Loading Plan	20ft : 129 boxes // 40ft : 267 boxes // 40H : 315 boxes

DIMENSIONS



DUOBACK CO.,LTD

HQ (Factory) : 27, Gajaeul-ro 32beongil, Seo-gu, Incheon, 22829, Korea.
Sales Office : #1002, 41, Digital-ro 31gil, Guro-gu, Seoul, 08375, Korea
T : +82-2-6204-2505 / F : +82-32-816-4817 / duo1350@duoback.co.kr
www.DUOREST.com

