



DUOBACK CO.,LTD.

27, Gajaeul-ro32beon-gil, Seo-gu, Incheon, Korea, 22829

Tel: +82-2-6204-2581 Fax: +82-32-816-4817

Web Site : www.duorest.com

For all repairs and service work under the limited warranty, you are kindly requested to contact DUOREST authorized agent or the store where you did buy DUOREST chairs in your country.

Any specification of chair may be changed or modified for its quality enhancement without any prior notice.





User Manual

DUOKIDS & JUNIOR

(Rabbit & Panda)

DUOBACK CO.,LTD.

Thank you for choosing DUOREST ergonomics chair. Before using your DUOREST chair, please read the 'Safety Instructions' carefully, as it explains the correct and safe handling of the chair.



Contents

- 02 Contents
- 03 Safety Instructions
- 05 How to Assemble
- 10 Basic Operation
- 13 Trouble shooting Guide
- 17 The product's warranty







Safety Instructions

- This product is a one-person chair that can be used indoors (in the office and home). It should not be used outdoors.
- Tighten the bolts and handle bolts of the product once every month.
- When cleaning the product, use a vacuum cleaner or wipe it with soft fabric

This is important information for the user's safety and for prevention of property damage. Please read carefully to use the product correctly.

 **Warning** If directions are not followed, it can cause death or serious injury.

 **Caution** If directions are not followed there could be personal injury or property damage.

 **Warning**

Use the product for its purpose

- Going to sleep on the product or using it to exercise can cause serious injury including death when the product falls over

Do not lean or stand up on the product

- There could be serious injury when the product falls over or rotates.

Do not lift your legs on a high surface when sitting on the product

- In the case that the product slips/falls, there's possible danger of serious injury and even death

Do not lean too far on the product

- It poses a risk of injury if the product falls

Do not use excessive force on the armrest.

- There is a risk of injury

Do not crawl under the product

- There is a risk of damage if the product falls

When using the product, sit correctly maintaining normal position

- When leaning on the backrest, seat pan, or the armrest, there is risk of injury

When someone is sitting down, do not spin or push

- There is a risk of damage

Do not put your hand in the product's assembling and operating areas.

- Your hand can get caught causing damage

Make sure infants, children, and pets do not bite or suck on the product.

- There is a risk of suffocation due to small, loose parts

Teach the child how to use the product properly and check up on them

- There is a risk of injury



No more than two people should sit on the seat pan

- It may cause damage to the product and serious injury

Be careful not to pinch your toes on the caster

- There could be damage to the toes caught



Caution

Do not use a sharp tool such as a knife when assembling the product

- There is a risk of personal injury and product damage

Do not use fire on the product or place it near heat such as direct sunlight

- There is a risk of fire igniting

Do not throw or push the product with force

- It may hurt others and cause damage to product

Assemble the product following instructions on the manual

- If the product is broken by not following the instruction manual, the product cannot be fixed free of charge under the warranty

Use gloves when assembling

- Handling with bare hands may risk injury

Do not use excessive force when assembling

- The product itself and/or several connecting handle bolts may be damaged or broken

Do not place or store the product on a slope

- When the product falls, the product and the floor may be damaged due to impact

Do not use the product where it is wet or polluted

- If the product slips, it could cause injury or contaminate the product

Do not place the product near a humidifier

- When using a humidifier, the calcareous components dissolved in the water may cause dust matter to accumulate on the product.

Use a floor mat when using the product on surfaces that can be easily damaged

- The floor may become contaminated or damaged

Constantly remove the dirt complied on the caster

- If the dirt is accumulated over time, it may become the source of damage

When cleaning a stained fabric, do not try to disassemble the product or wash it out with water

- It may alter the shape and cause the product to malfunction in use
- If the fabric is partly contaminated, rub with mild detergent and use after it completely dries.

Do not use the foot rest to get on the chair.

- It may cause damage and injury if the product falls over

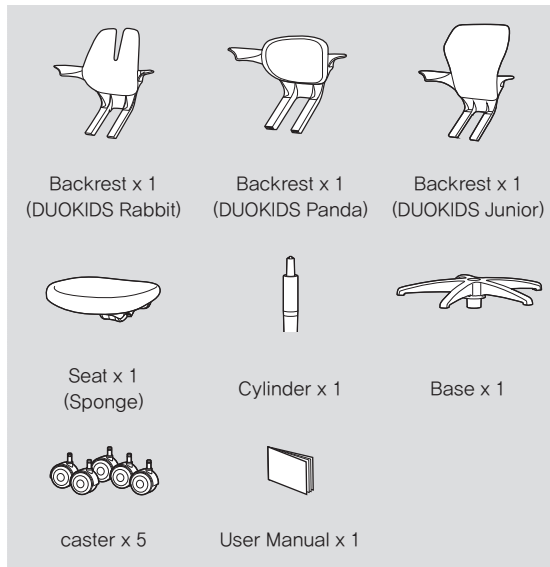


How to Assemble

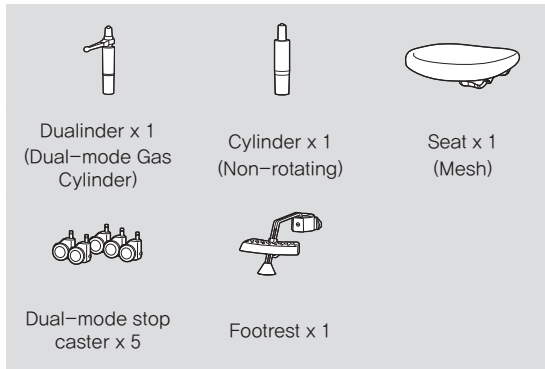
Parts Description

• Basic Components

(Please, check the parts firstly before you assemble)



• Option Components




* The above illustrations may be different from actual parts.




Dimension & Material


• DUOKIDS Rabbit (Mesh seat/Dualinder)

 150mm 65mm 864/891mm	Material
	Body Frame : Steel, Aluminum, Synthetic resins and etc. Cushion : Polyester


• DUOKIDS Rabbit (Mesh seat/Cylinder)

 150mm 65mm 864/896mm	Material
	Body Frame : Steel, Aluminum, Synthetic resins and etc. Cushion : Polyester


• DUOKIDS Rabbit (Sponge seat/Dualinder)

 150mm 65mm 863/890mm	Material
	Body Frame : Steel, Aluminum, Synthetic resins and etc. Cushion : Urethane foam


• DUOKIDS Rabbit (Sponge seat/Cylinder)

 150mm 65mm 900/1014mm	Material
	Body Frame : Steel, Aluminum, Synthetic resins and etc. Cushion : Urethane foam


• DUOKIDS Panda (Mesh seat/Dualinder)

 150mm 65mm 777/814mm	Material
	Body Frame : Steel, Aluminum, Synthetic resins and etc. Cushion : Polyester


• DUOKIDS Panda (Mesh seat/Cylinder)

 150mm 65mm 777/891mm	Material
	Body Frame : Steel, Aluminum, Synthetic resins and etc. Cushion : Polyester

• DUOKIDS Panda (Sponge seat/Dualinder)

 150mm 65mm 777/814mm	Material
	Body Frame : Steel, Aluminum, Synthetic resins and etc. Cushion : Urethane foam


• DUOKIDS Panda (Sponge seat/Cylinder)

 150mm 65mm 794/808mm	Material
	Body Frame : Steel, Aluminum, Synthetic resins and etc. Cushion : Urethane foam







• DUOKIDS Junior (Mesh seat/Dualinder)

	Material
	Body Frame : Steel, Aluminum, Synthetic resins and etc. Cushion : Polyester


• DUOKIDS Junior (Mesh seat/Cylinder)

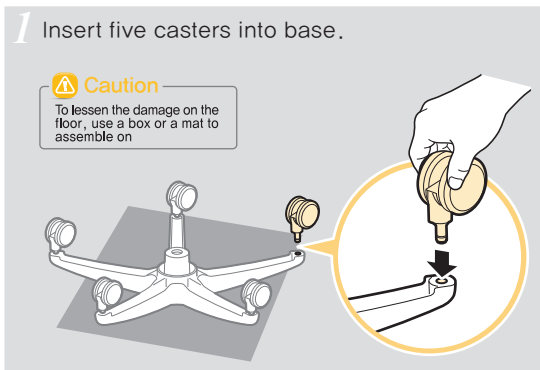
	Material
	Body Frame : Steel, Aluminum, Synthetic resins and etc. Cushion : Polyester

• DUOKIDS Junior (Sponge seat/Dualinder)

	Material
	Body Frame : Steel, Aluminum, Synthetic resins and etc. Cushion : Urethane foam

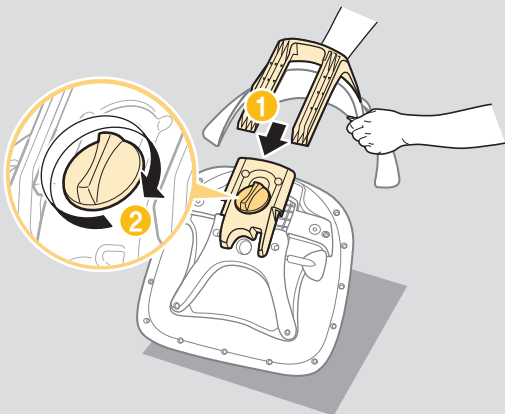
• DUOKIDS Junior (Sponge seat/Cylinder)

	Material
	Body Frame : Steel, Aluminum, Synthetic resins and etc. Cushion : Urethane foam



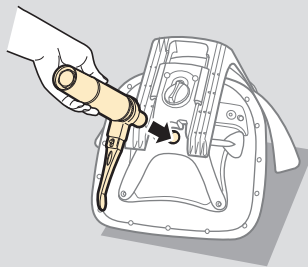


- 2 Insert backrest frame into connection bracket(1). Tighten knob under seat clockwise(2) so that backrest and seat can be firmly fixed.

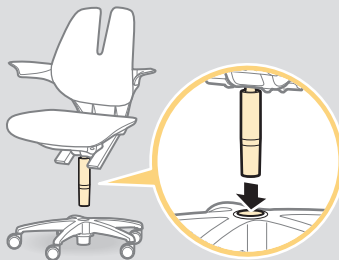


- 3 Insert Cylinder into central hole under seat.

- In the case of Dualinder place its lever to face the front of chair as shown below.



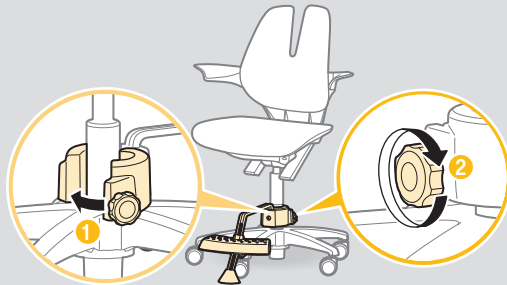
- 4 Insert Cylinder into central hole of base.






5 After opening footrest holder, put Dualinder in footrest(1). Then, tighten knob clockwise(2).

- This step only applies to models for footrest.



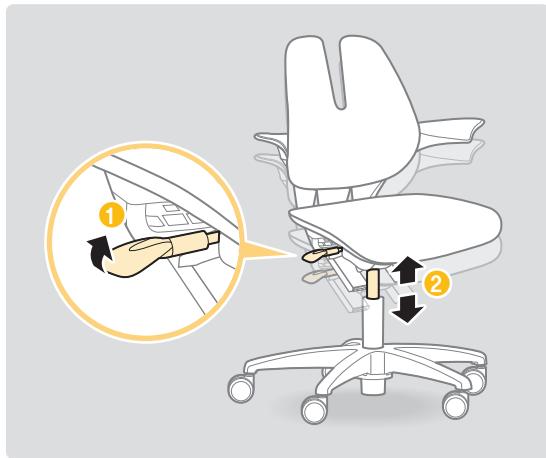
6 The assembly is finished.

 **Caution** Place the footrest 5mm higher from floor surface so that casters can roll smoothly on the floor.



Basic Operation

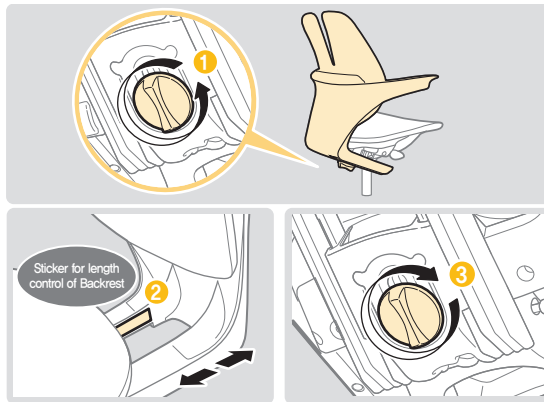
Seat Height Adjustment



Lever on right side of chair

- To raise : Lift lever up (1) while removing your weight from chair (2)
- To lower : Lift lever up (1) while seated.

Adjust Depth/Height



Control knob under the seat

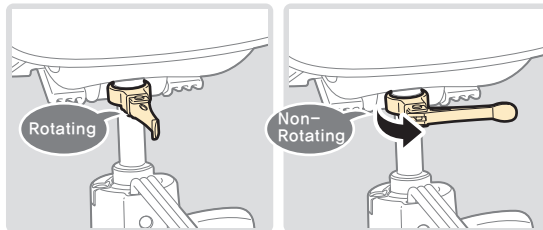
To adjust depth : Turn knob counter-clockwise to unlock (1). Adjust backrest frame at desired position (2). Turn knob clockwise to lock (3).

- There is Sticker for length control of Backrest in the inside Backrest Post.
- In case of the model DUOKIDS, refer to the upper measurement (120~160cm), In case of the model DUOFLEX JUNIOR, refer to the bottom measurement (140~160cm).





Dual-mode cylinder (Dualinder)



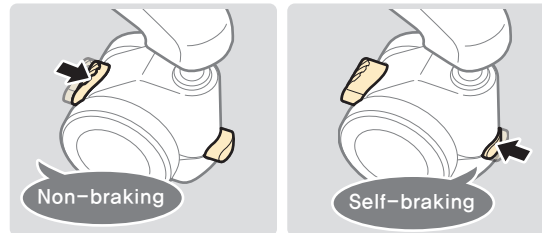
Control lever in gas cylinder

- To select preferred position : Locate lever at rotating position or non-rotating position.

Caution Excessive load on the chair under non-rotating position may cause chair to rotate unintentionally or damage it.

Reference This step only applies to models for Dual-mode cylinder (Dualinder).

Dual-mode castor



Push button in castor

- To set non-braking position : Push front button back ward
- To set self-braking position : Push rear button forward.

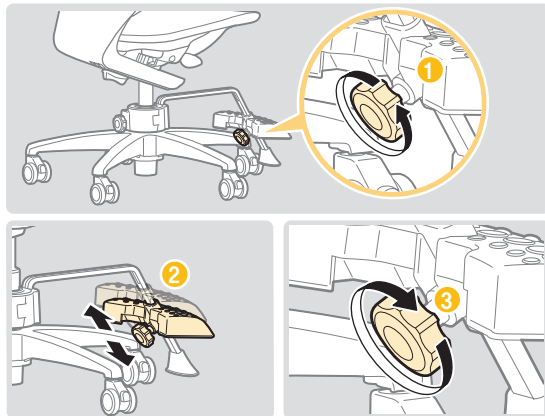
Caution

- At self-braking position, castor dose not roll when seated. It will roll after removing your weight.
- Caster rolls well when all of them under the same position
- Self-braking position may not work properly when the user whose body weight less than 20kgs sits on the chair.

Reference This step only applies to models for Dual-mode castor.




Footrest Height



Handle bolt in foot stage

- To adjust height : Loosen handle bolt counter-clockwise(1), and raise or lower foot stage to desired position(2). Tighten handle bolt clockwise(3).

 **Caution** You are ergonomically advised to adjust footrest height, making a right angle(90°) with your calf and thigh.

 **Reference** This step only applies to models for footrest.



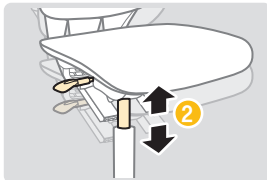
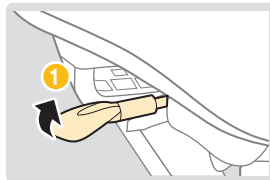


Trouble shooting Guide

If chair malfunctions, you may be able to solve such problem with the following suggestions. For more help, you are advised to contact the local store where you purchased the chair.

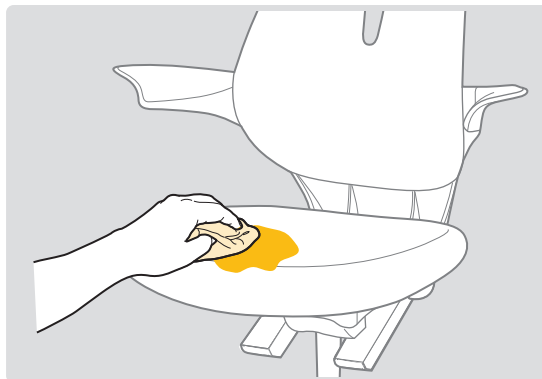
Seat height adjustment won't work

- You may not have lifted the lever up all the way.
- To increase seat height, try lifting lever up all the way(①) while removing your weight from chair(②).
- To decrease seat height, lift lever up all the way(①) while seated(②).



Contaminated fabric needs cleaning

- Genuine leather or PU leather : Apply a mild, nonabrasive soap solution with a clean, wet sponge. Then, rinse well and let it air dry.
- General fabric : clean dirty surface with a soft cloth soaked in mild detergent and warm water. Rinse thoroughly and dry with a soft cloth.



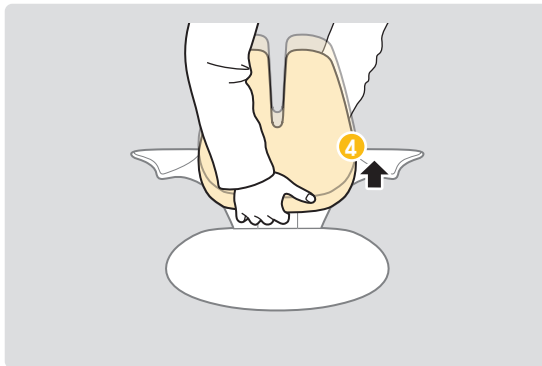
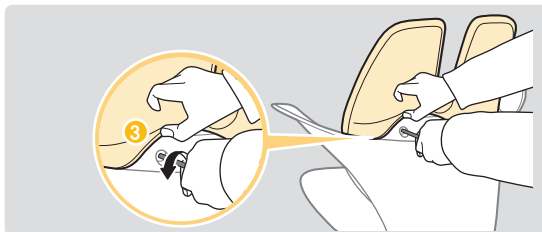
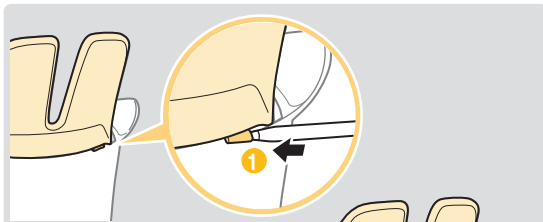
Do not wash or disassemble contaminated seat or backrest for cleansing stains or spots. It may result in permanent damage to the material.




Replacing backrest upholstery

I Separating Upholstery from Backrest

- Pull over the tag (2) after pulling it out the hole using a pen etc. (1)
- If you see the two holes (left/right 2), loosen the bolts in counter-clockwise, using a six angles wrench. (3)
- The upholstery will be separated from the backrest if you pull over the upholstery. (4)



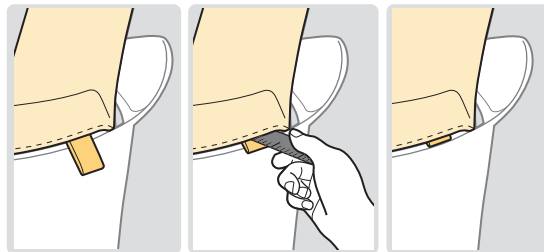
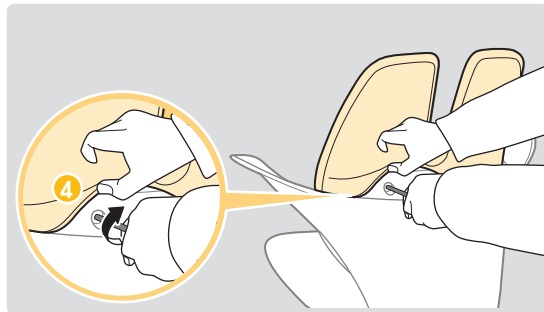
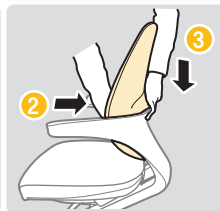
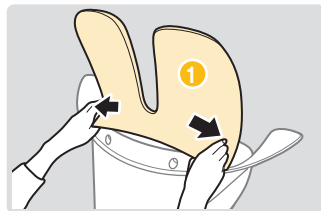
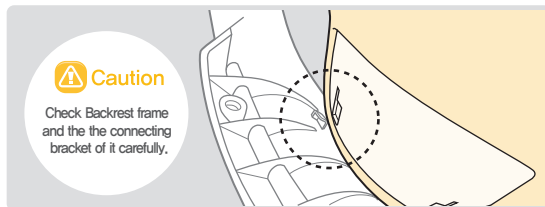
 **Caution** Backrest cover can be easily separated from Backrest because it is sealed by rubber band





2 Installing Backrest Upholstery

- Cover the upholstery on top of the backrest, after opening side to side it using your thumbs. (1)
- Pull Upholster down (3), pulling the bottom of Upholster to Backrest frame (2). If it is fixed without any movement it would be settled properly.
- Then tighten the bolts(left/right 2) counterclockwise. (4)
- Please, push the part of the sewing into the hole of backrest using a ruler.

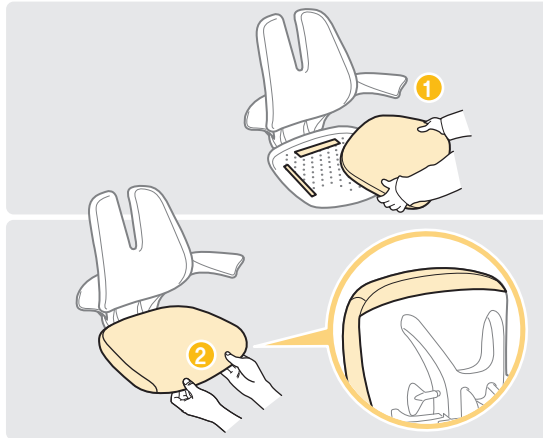


- **Caution** Pull Upholster fully, otherwise it will be wrinkled.
- If it is difficult to install Upholster without wrinkles, it would be recommended to change Backrest frame fully.



Replacing seat upholstery

- After taking off seat pan, cover seat cushion with new upholstery and attach seat pan to Velcro straps. Pull front part of upholstery forward and fix it to Velcro strap under the front of seat.



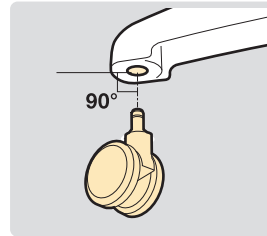
Caution

Property to diminish the contamination of seat upholstery may be lessened due to the frequency of use and washing.

- This feature is supported only on those products

Dislocated castor from Base

- Insert castor perpendicularly into hole of base.





The product's warranty

- 1 All DUOREST products comply with the highest standard of quality assurance and inspection programs. DUOREST products are fabricated using more than 100 pieces of parts which have undergone stringent superiority tests.
- 2 This limited warranty is valid for ONE to THREE YEARS under an applicable warranty classification (from the date of purchase) against all possible manufacturing defects arising from materials and workmanship.
- 3 This warranty becomes invalid should the serial number(bar code) be removed or altered. All repairs and service work under the warranty must be performed only by DUOREST's authorized agent. Such service shall be provided during normal business hours. Customers are advised to contact DUOREST's authorized agent for further details.
- 4 The warranty does not cover damage caused by misuse or neglect, accidents, abrasions, normal wear and tear or any manner of tempering, self modification, abuse or Act of God.

- 5 If identical materials or models are not available at the time of repair or replacement , DUOREST's authorized agent reserves all rights to substitute parts or models of equal quality or value.
- 6 **THIS LIMITED WARRANTY IS THE SOLE REMEDY FOR PRODUCT DEFECT AND NO OTHER EXPRESS OR IMPLIED WARRANTY IS PROVIDED, INCLUDING BUT NOT LIMITED TO ANY IMPLIED WARRANTIES OF MERCHANTABILITY OR FITNESS FOR A PARTICULAR PURPOSE. WE SHALL NOT BE LIABLE FOR CONSEQUENTIAL OR INCIDENTAL DAMAGES ARISING FROM ANY PRODUCT DEFECT.**

WARRANTY CLASSIFICATION		
Warranty period	Parts	Classification
1 Year	Appearance	Physical defectives
2 Years	Adjustment	Malfunction of adjustable function (height, width, swiveling, tilting and locking)
3 Years	Body and Frame	Metallic frames and injection molded parts