

# LIMA



## A CLOSER LOOK

---

### Adjustable Headrest

Optional Headrest accessory adjusts 70mm (2.2") vertically.

- Pivoting range : 74°

### Arms

3D arms allow fluid adjustment in three directions :

- Height adjustment range : 68mm (2.6")
- Front-to-back adjustment range : 40mm (1.6")
- Pivoting arm caps : 15° inward and 15° outward

### Weight-activated

Synchronized Mechanism  
Auto-Balance tension adjustment utilizes the weight of the user to balance resistance of the back.  
3:1 back to seat synchronous movement with 3 position back lock.  
Back reclines 18° from upright position.

### Base

27" (688mm) Five-arm base is available in Black and White.

### Mesh Back

Provides dynamic support and allows airflow, providing a comfortable sit in any environment.

### Lumbar Support

Lumbar height adjusts within a 70mm (2.8") range to provide additional lower back support..

### Seat Slider

Seat depth adjusts within a 50mm (2") range to accommodate users of varying leg lengths.



### Casters

Soft dual-wheel casters are 50mm O.D. for use on hard floors. Only available in Black.

## FEATURES

---

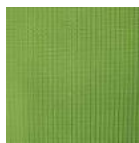
- Adjustable headrest with PU Pad
  - Mesh Back with Adjustable Lumbar Support
  - Weight-activated Synchronized Mechanism from DONATI
  - Backrest Tilt Lock in 3 positions by lever
  - Standard Seat Slider
  - Adjustable Armrest with PU Pad
  - 50mm Hard Floor Casters in Black
  - Frame available in Black and White
  - Base available in Black and White
  - Standard 300 lbs. weight capacity
  - GREENGUARD GOLD certified
- 

### Mesh (Back)

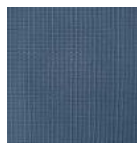
---



Mat Mesh Black  
(7QBK1)



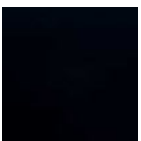
Mat Mesh Green  
(7QGN1)



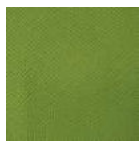
Mat Mesh Grey  
(7QGY1)

### Mesh (Seat)

---



Mat Black  
(6QFK1)



Mat Green  
(6QFN1)



Mat Grey  
(6QFY1)

### STATEMENT OF LINE

---



Standard  
(LM-200CW)



Without Headrest  
(LM-050C)

### CERTIFICATIONS

---

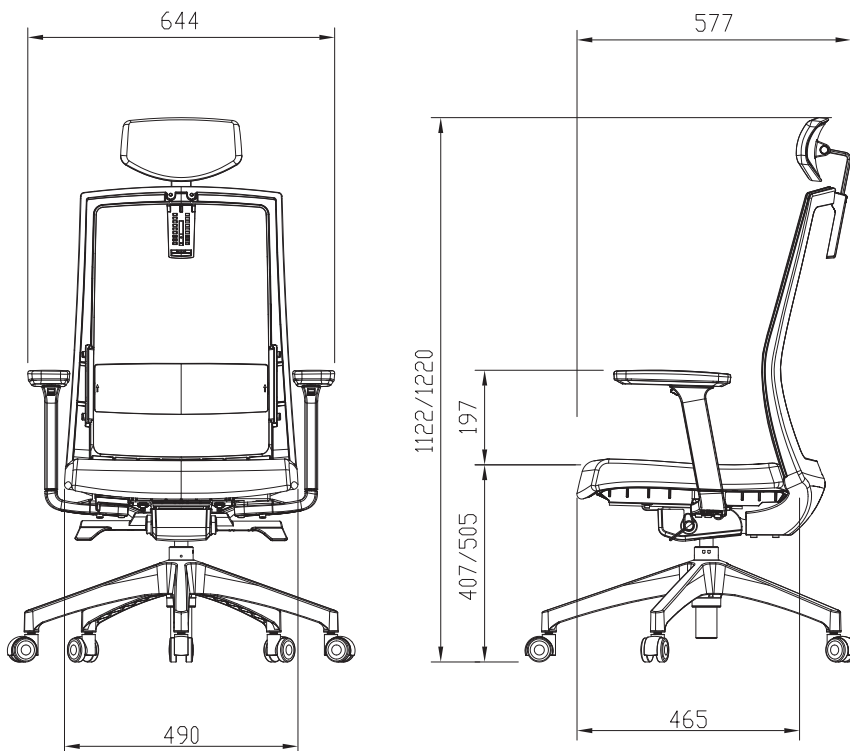
- ANSI/BIFMA X5.1-2017
- TB117-2013
- GREENGUARD Gold
- ISO 14001 & 9001



## SPECIFICATIONS

• Net Weight	15.2kg (33.5 lbs)
• Headrest Frame	PA6
• Backrest Frame	PA6
• Lumbar Support	PU
• Cushion Seats	Polyurethane fill
• Seat Pan Frame	PP
• Adj. Armrest	PA6
• Base Materials	PA6
• Casters Materials	PA6 and PU
• Carton Box Size	760*370*660(mm)
• Container Loading Plan	20ft : 112 boxes // 40ft : 230 boxes //
	40H : 270 boxes

## DIMENSIONS



Ver. 202012

### DUOBACK CO.,LTD

HQ (Factory) : 27, Gajaeul-ro 32beongil, Seo-gu, Incheon, 22829, Korea.  
 Sales Office : #1002, 41, Digital-ro 31gil, Guro-gu, Seoul, 08375, Korea  
 T : +82-2-6204-2584 / F : +82-32-816-4817 / export@duoback.co.kr  
 www.DUOREST.com

