

GOLD



Adjustment Guide

Adjustable Headrest

Optional Headrest accessory adjusts 72mm (2.8") seven steps vertically. The ultra-flexible rubber joint supports user's head very comfortably.

Arms

Arms allow fluid adjustment in two directions :

- Height adjustment range : 70mm (2.8")

Adjustable Backrest

Backrests allow fluid adjustment in two directions :

- Height adjustment range : 20mm (0.8")
- Width adjustment range : 80mm (3.1")

DUOREST® System

DUOREST® System makes dynamic sitting by allowing freedom of movement in any position.

DUOREST® System reduces fatigue and alleviates back pains associated with long sitting.

Self Tension Tilt Mechanism

Recline back and seat movement featuring a 4:1 back to seat tilt ratio.

- Back reclines 16° from upright position
- Backrest Tilt Lock in Multi positions by lever

Base

27" (684mm) Five-arm base is available in Black and White.

Casters

Soft dual-wheel casters are 50mm O.D. for use on hard floors. Only available in Black.



FEATURES

- Ergonomic DUOREST® System
- Self Tension Tilt Mechanism
- Backrest Tilt Lock in Multi positions by lever
- Standard Seat Slider
- Height Adjustable Armrest with PU Pad
- 50mm Hard Floor Casters in Black
- Standard 300lbs. Weight capacity
- Flexible Headrest

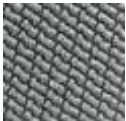
COLORS

BLACK FRAME

Fabric (Back & Seat)



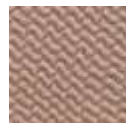
EK20-BLACK
(FEKBK)



EK20-GRAY
(FEKGY)



EK20-BLUE
(FEKDB)



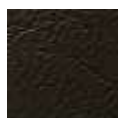
EK20-BEIGE
(FEKBI)

Mesh (Seat)



ID102-BLACK

Syn. leather(Headrest)

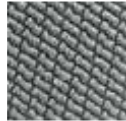


BLACK

WHITE FRAME



EK20-BEIGE
(FEKBI)



EK20-GRAY
(FEKGY)



EK20-GREEN
(FEKBG)



EK20-RED
(FEKRD)



ID102-LIGHT GRAY



LIGHT GRAY

STATEMENT OF LINE



D2500G-DAS



D025G-DASW



D2500G-DAM



D025G-DAMW

CERTIFICATIONS

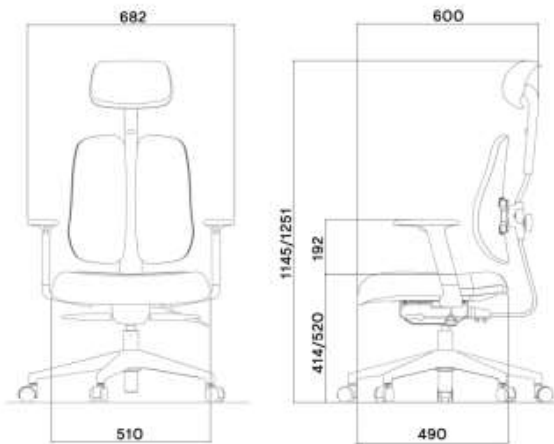


ANSI/BIFMA X5.1-2017
ISO 14001 & 9001

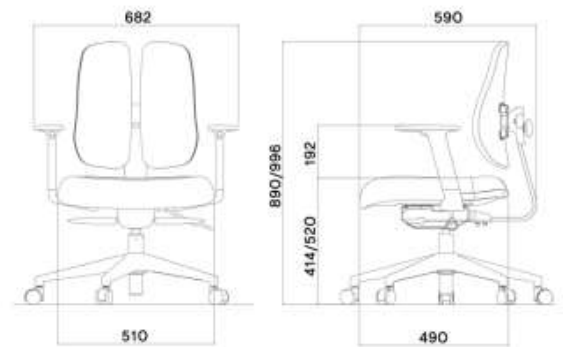
SPECIFICATIONS

• Net Weight	18.2kg (40lbs) w/o headrest 16.7kg (37lbs)
• Headrest Frame	PU / PA6+GF30%
• Backrest Frame	STEEL
• Seat (Cushion /Mesh)	Polyurethane fill / PA6+GF30%
• Seat Pan Frame	PU / PP
• Adj. Armrest	PA6+GF30%
• Base Materials	PA6+GF30%
• Casters Materials	PA6+PE
• Carton Box Size	685*650*415 (mm)
• Container Loading Plan	20ft: 137boxes//40ft: 288boxes//40H: 350boxes

DIMENSIONS



D2500G-DAS : net weight 18.2Kg, gross weight 22.48Kg



D025G-DAS : net weight 16.8Kg, gross weight : 21.08Kg

DUOBACK CO.,LTD

HQ (Factory) : 27, Gajaeul-ro 32beongil, Seo-gu, Incheon, 22829, Korea.
 Sales Office : #1002, 41, Digital-ro 31gil, Guro-gu, Seoul, 08375, Korea
 T : +82-2-6204-2584 / F : +82-32-816-4817 / DUO1350@duoback.co.kr
 www.DUOREST.com

